

Diary Dates

10th January

Play sessions for starters

16th January

Writing workshop led by
Karen

18th January

Parents Coffee morning
08.45 - 10.00

9th February

Come and share your child's
Leaning Journal with them.

16th February

Last day of term.

19th - 23rd February

Half term holiday

26th February

Nursery School open– back
to school

23rd March

Come and share your child's
Leaning Journal with them.

28th March

Last Day of term

29th March

Teacher training day

23rd March

Learning Journal share

30th March - 13th April

Easter holiday

23rd March

Learning Journal share

16th April

Teacher Day
2 year old checks

Happy New Year

To all our returning children and parents, welcome back we hope you are well rested after the holiday.

A big welcome to all our new families. We hope you enjoy the settling period when you and your child are able to get to know us.

Staff

As our rising 3s in Orchard have all turned 3 years old we will see Sonia and Ranjit move through to Meadow to welcome our Rising 2s.

Parent Governor

A vacancy has arisen for a parent governor. The role of the governing body is a strategic one, its key functions are to:

- Set the aims and objectives for the school
- Set the policies for achieving those aims and objectives
- Monitor and evaluate the progress the school is making towards achieving its aims and objectives

If you would like to know more please pick up some information from Harminder or Michele and come and speak to a serving governor.

If you think it is for you we will ask you to be nominated by 2 other parents and then a ballot will be taken.

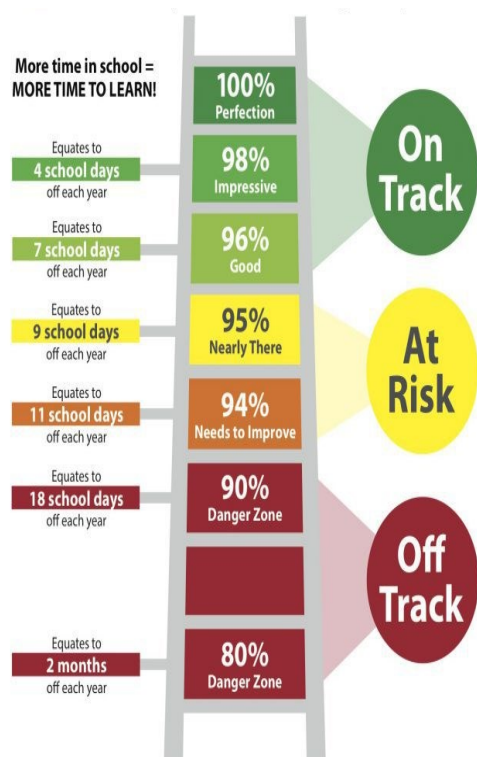
Pram Store

To support you being able to leave your pushchairs safely during a session the Family Hub will ensure their pram store is always open. You may collect a lock from the school office before taking your pushchair around to the other side of the building.

This will help us in our fire safety as there are too many pushchairs being left in our small entrance and they are becoming a fire hazard.

Attendance Ladder

For every session your child is absent from Nursery School 3 hours of learning is lost.



Where our children are on the ladder ?

100%	0
98% - 99.9%	5
96% - 97.9%	6
95% - 95.9%	8
94% - 94.9%	5
90% - 93.9%	22
Below 90%	94

Attendance Board

Will your child manage to get onto our attendance board?



Is your child going to get 100% this half term?

Only 3 managed it last half term. Remember a cough and cold is not a reason to be off school.



Will they get 95% to 99%?

11 children managed this last half term. It is really important that attendance is high to support your child's learning.



I am hoping at least one child can get 100% for the whole of next term. Unfortunately no one made it for Autumn Term.